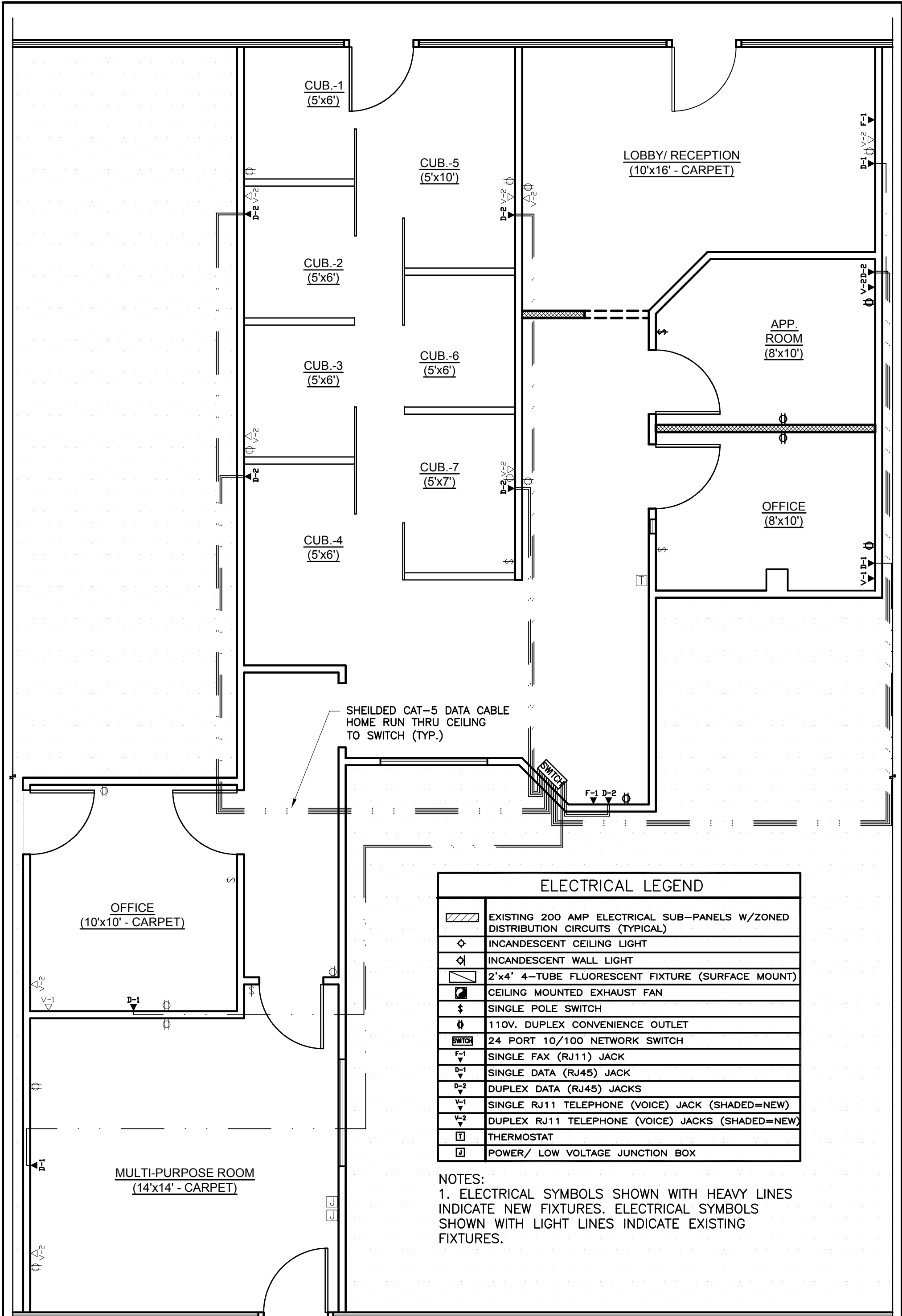


- NOTES:
1. DIMENSIONS ARE TO FACE OF STUD U.N.O (TYP.)
  2. FLOOR SHALL BE CARPETED; PAINT WALLS & CEILINGS.
  3. VERIFY ALL DIMENSIONS IN THE FIELD. FIELD DIMENSIONS SHALL GOVERN WHEN DISCREPANCIES ARE DISCOVERED.
  4. HATCHED WALLS INDICATE NEW WALLS TO BE CONSTRUCTED OF 2½" (26)GA. METAL STUDS @ 16" O.C. W/ 5/8" TYPE "X" GYP. BD. EACH SIDE.

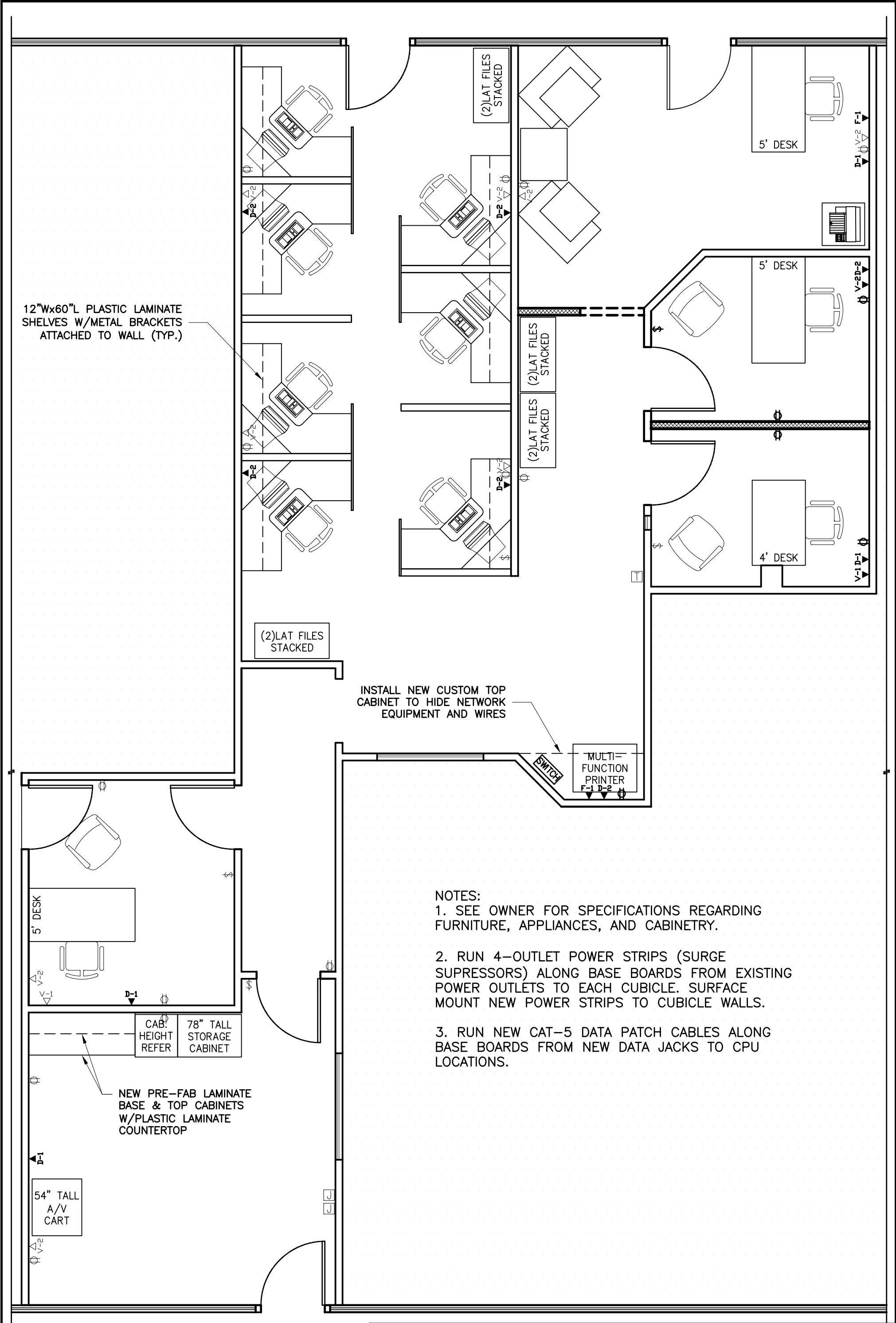
<b>FLOOR PLAN</b>	DATE: 3/19/2003
	SCALE: ¼" = 1'-0"
	SHEET: A-1

TENANT IMPROVEMENT PROJECT FOR RICHARD PHIPPS



ELECTRICAL LEGEND	
	EXISTING 200 AMP ELECTRICAL SUB-PANELS W/ZONED DISTRIBUTION CIRCUITS (TYPICAL)
	INCANDESCENT CEILING LIGHT
	INCANDESCENT WALL LIGHT
	2'x4' 4-TUBE FLUORESCENT FIXTURE (SURFACE MOUNT)
	CEILING MOUNTED EXHAUST FAN
	SINGLE POLE SWITCH
	110V. DUPLEX CONVENIENCE OUTLET
	24 PORT 10/100 NETWORK SWITCH
	SINGLE FAX (RJ11) JACK
	SINGLE DATA (RJ45) JACK
	DUPLEX DATA (RJ45) JACKS
	SINGLE RJ11 TELEPHONE (VOICE) JACK (SHADED=NEW)
	DUPLEX RJ11 TELEPHONE (VOICE) JACKS (SHADED=NEW)
	THERMOSTAT
	POWER/ LOW VOLTAGE JUNCTION BOX

NOTES:  
 1. ELECTRICAL SYMBOLS SHOWN WITH HEAVY LINES INDICATE NEW FIXTURES. ELECTRICAL SYMBOLS SHOWN WITH LIGHT LINES INDICATE EXISTING FIXTURES.



12"Wx60"L PLASTIC LAMINATE SHELVES W/METAL BRACKETS ATTACHED TO WALL (TYP.)

(2)LAT FILES STACKED

(2)LAT FILES STACKED

(2)LAT FILES STACKED

(2)LAT FILES STACKED

INSTALL NEW CUSTOM TOP CABINET TO HIDE NETWORK EQUIPMENT AND WIRES

SWITCH

MULTI-FUNCTION PRINTER  
F-1 D-2

5' DESK

CAB. HEIGHT REFER

78" TALL STORAGE CABINET

NEW PRE-FAB LAMINATE BASE & TOP CABINETS W/PLASTIC LAMINATE COUNTERTOP

54" TALL A/V CART

NOTES:

1. SEE OWNER FOR SPECIFICATIONS REGARDING FURNITURE, APPLIANCES, AND CABINETS.
2. RUN 4-OUTLET POWER STRIPS (SURGE SUPPRESSORS) ALONG BASE BOARDS FROM EXISTING POWER OUTLETS TO EACH CUBICLE. SURFACE MOUNT NEW POWER STRIPS TO CUBICLE WALLS.
3. RUN NEW CAT-5 DATA PATCH CABLES ALONG BASE BOARDS FROM NEW DATA JACKS TO CPU LOCATIONS.

FURNITURE PLAN

TENANT IMPROVEMENT PROJECT FOR RICHARD PHIPPS

DATE: 3/19/2003

SCALE: 1/4" = 1'-0"

SHEET: A-3